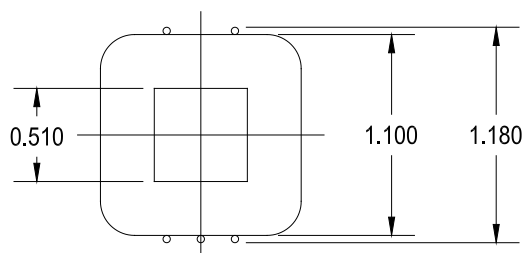
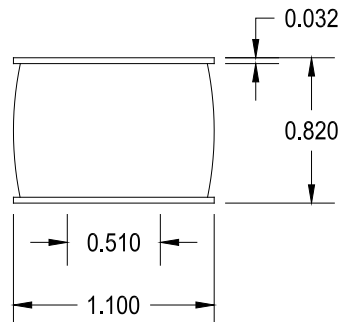


124C


TUBE DRIVER - INTERSTAGE TRANSFORMER

This is the same coil used in the 124A + B.
This is sold for the experimenters who want to use their own
“iron”, “alloy”, or specialty core.
Lead length minimum 5” long



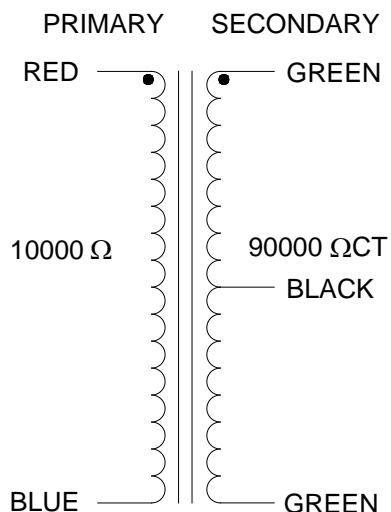
ELECTRICAL SPECIFICATIONS

Characteristic	Typical
Input Impedance	10,000 Ω
Output Impedance	90,000 ΩCT
Output Power	5.0 Watts
DCR	
Primary	405 Ω
Secondary	1525 Ω
Inductance @ 1.0 kHz, 1.0 V OC	
Primary	0.13 H (No Core)
Secondary	0.914 H (No Core)
Leakage Inductance	
Impedance @ 1.0 kHz, 1.0 V OC	
Primary	0.57 kΩ
Secondary	5.52 kΩ
Frequency Response	±1db from 150Hz to 15Hz
Turns ratio	1:3
Dielectric Strength	500 Vrms



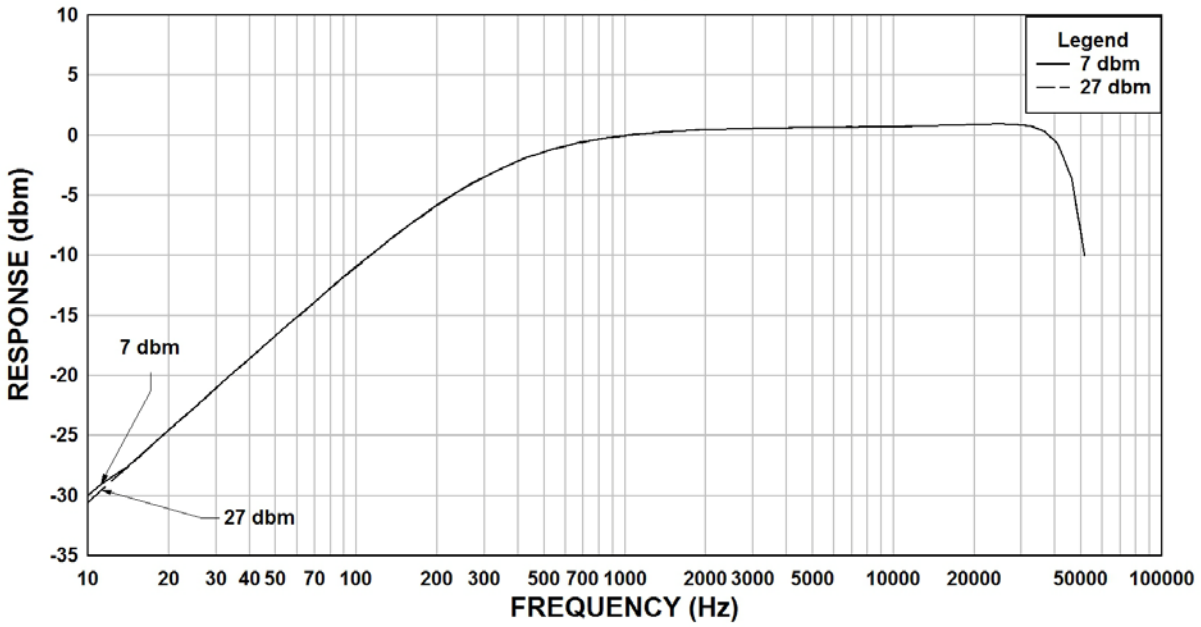
124C
5W 150Hz - 15kHz
RED - BLU: 10000Ω
GRN - BLK - GRN: 90000ΩCT
MADE IN CANADA

SCHEMATIC DIAGRAM



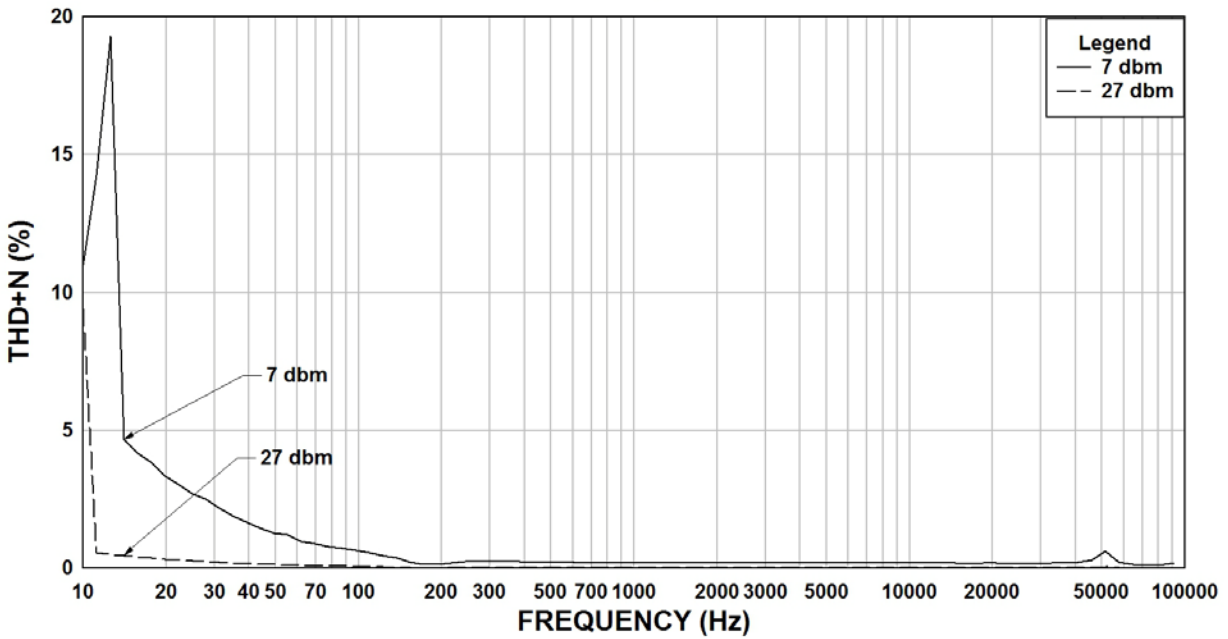
124C Rs=10K, RI=90K Frequency Response

Coil Only

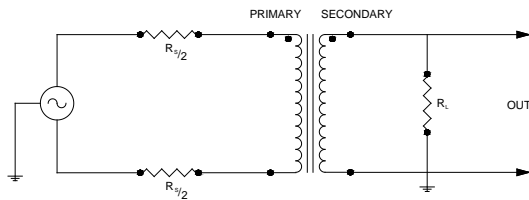


124C Rs=10K, RI=90K THD+N

Coil Only



TYPICAL TEST CIRCUIT



Measurement instruments
 Hp4192a impedance analyzer
 Hp3456a DVM
 Keithley 2002 DVM
 D scope series iii audio analyzer

This drawing and the information in it is the property of Hammond Manufacturing. It may not be reproduced, transmitted or used in any manner whatsoever without the written permission of Hammond Manufacturing. Data subject to change without notice.